

**Splash Fit Swim Club**



**APP MANUAL**



**TABLE OF CONTENTS**

**APP DOWNLOAD/ ACCOUNT CREATION.....Pg 3**

**CREATING STUDENT/CLASS SCHEDULE .....Pg 4-5**

**PAYMENT METHOD.....Pg 6**

**MAKEUP TOKENS .....Pg 7**

**APPLYING MAKEUP TOKENS .....Pg 8**

**ABSENCE REQUEST .....Pg 9**

**CLASS DROP.....Pg 10**

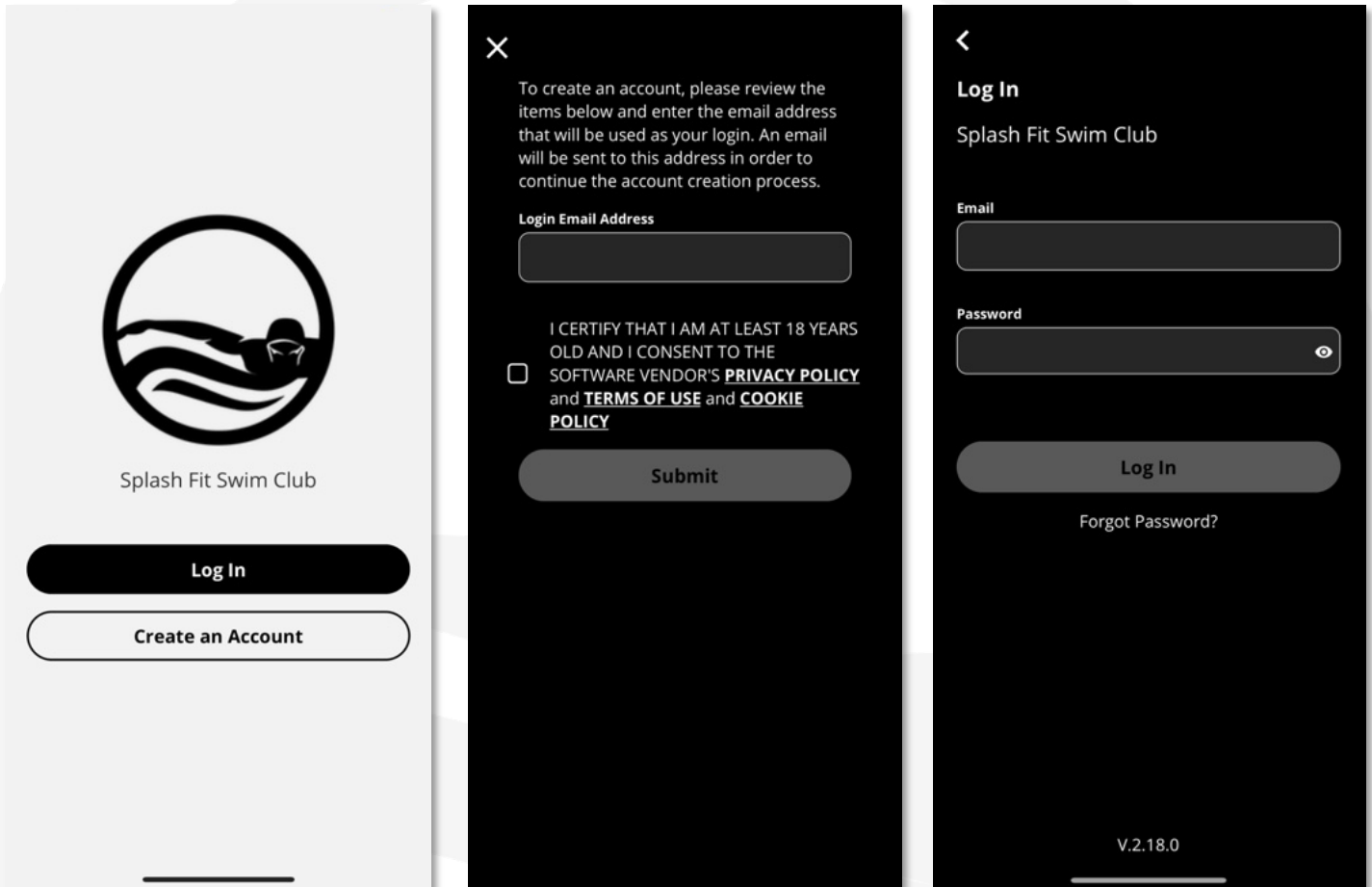
**LOCATION SETTINGS.....Pg 11**

**NOTIFICATIONS.....Pg 12**

**APP DOWNLOAD:**

**iOS:** <https://apps.apple.com/us/app/splash-fit/id1667323582>

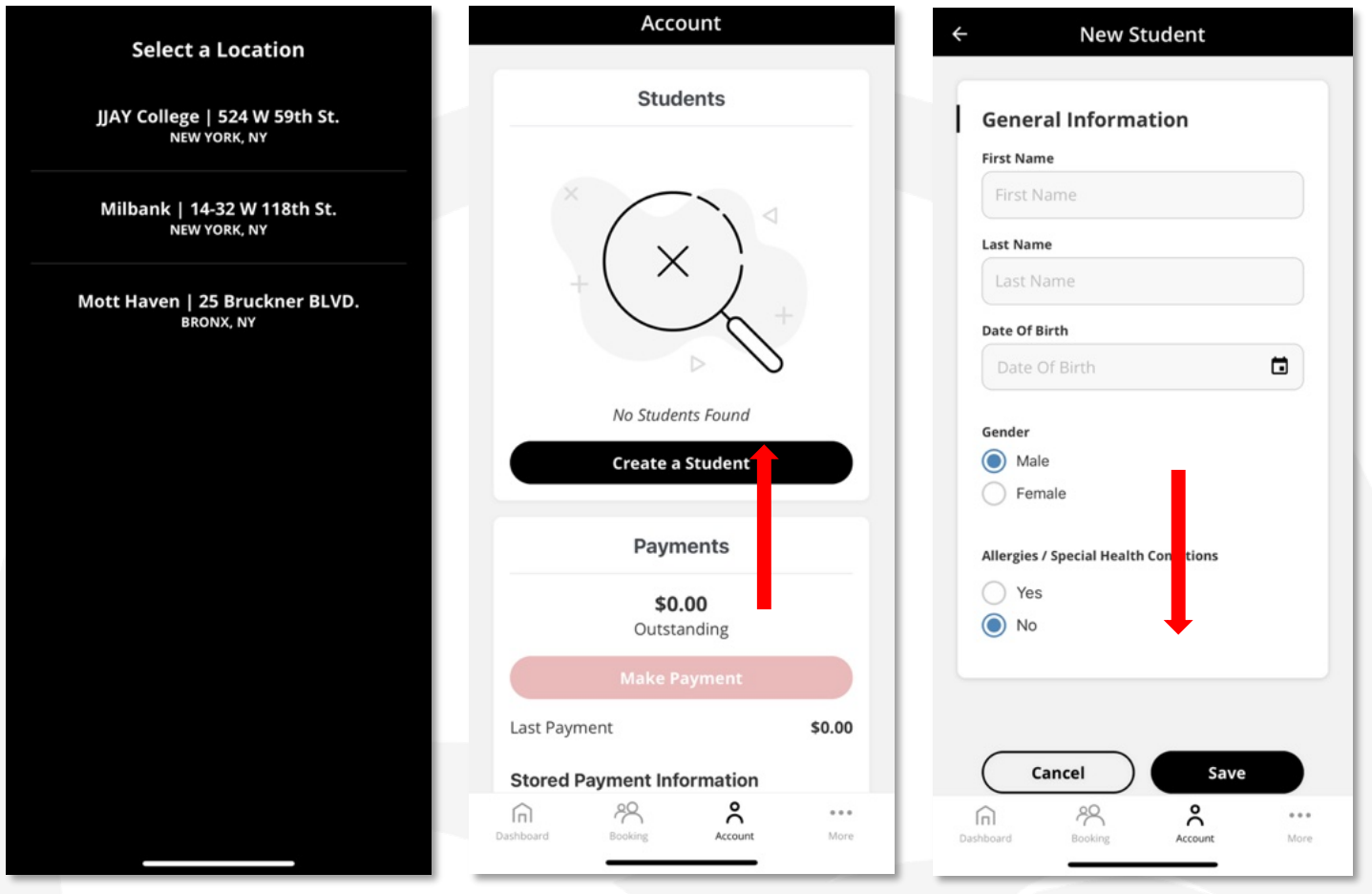
**Android:** [https://play.google.com/store/apps/details?id=org.splashfit.icp&pcampaignid=web\\_share](https://play.google.com/store/apps/details?id=org.splashfit.icp&pcampaignid=web_share)



**New User :** Create an account using valid email address

**Sign In:** Use credentials

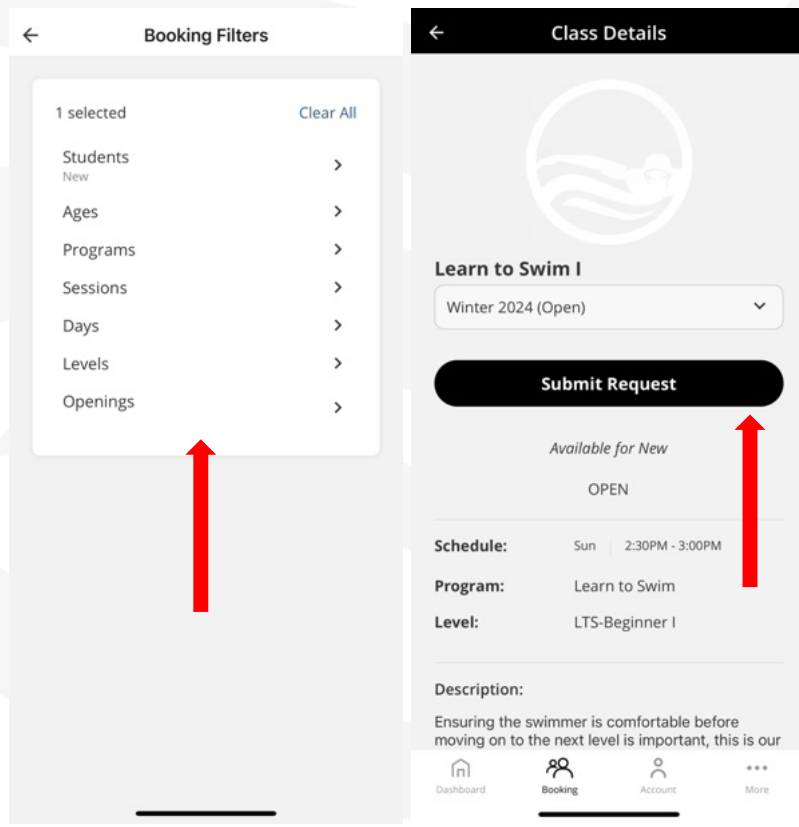
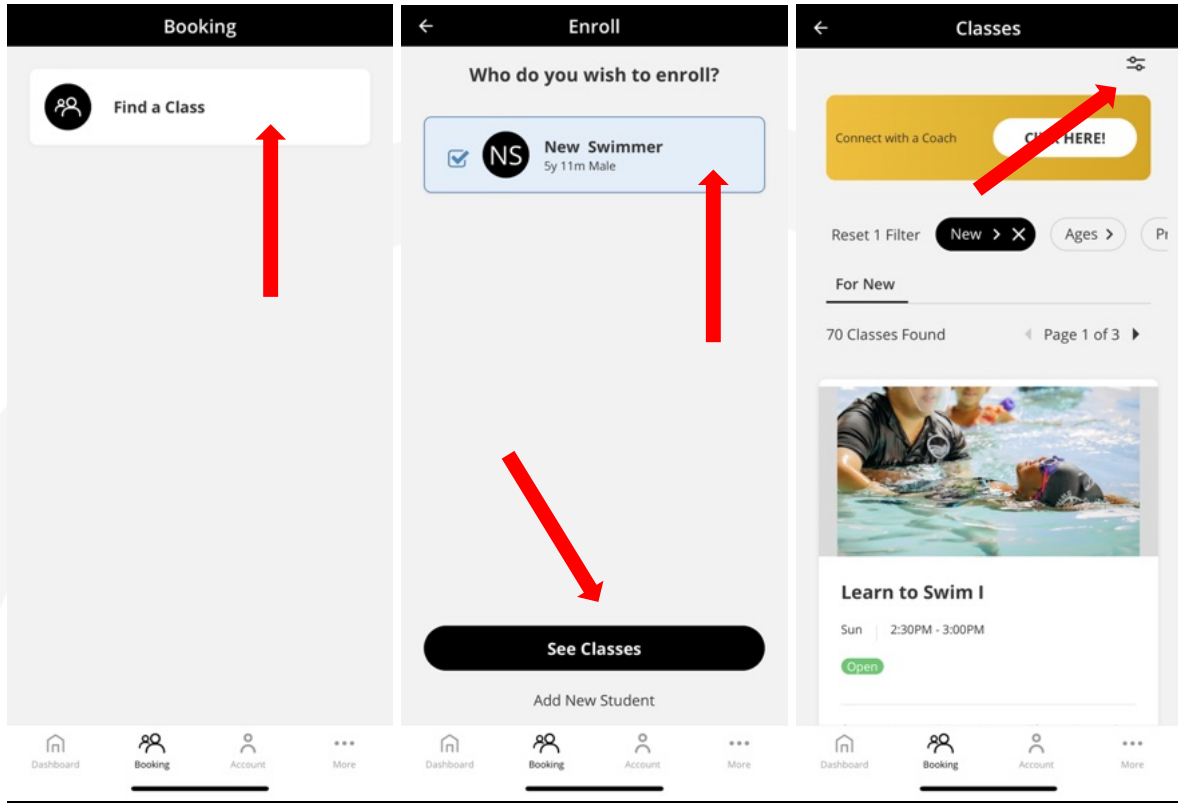
## CREATING AN ACCOUNT:



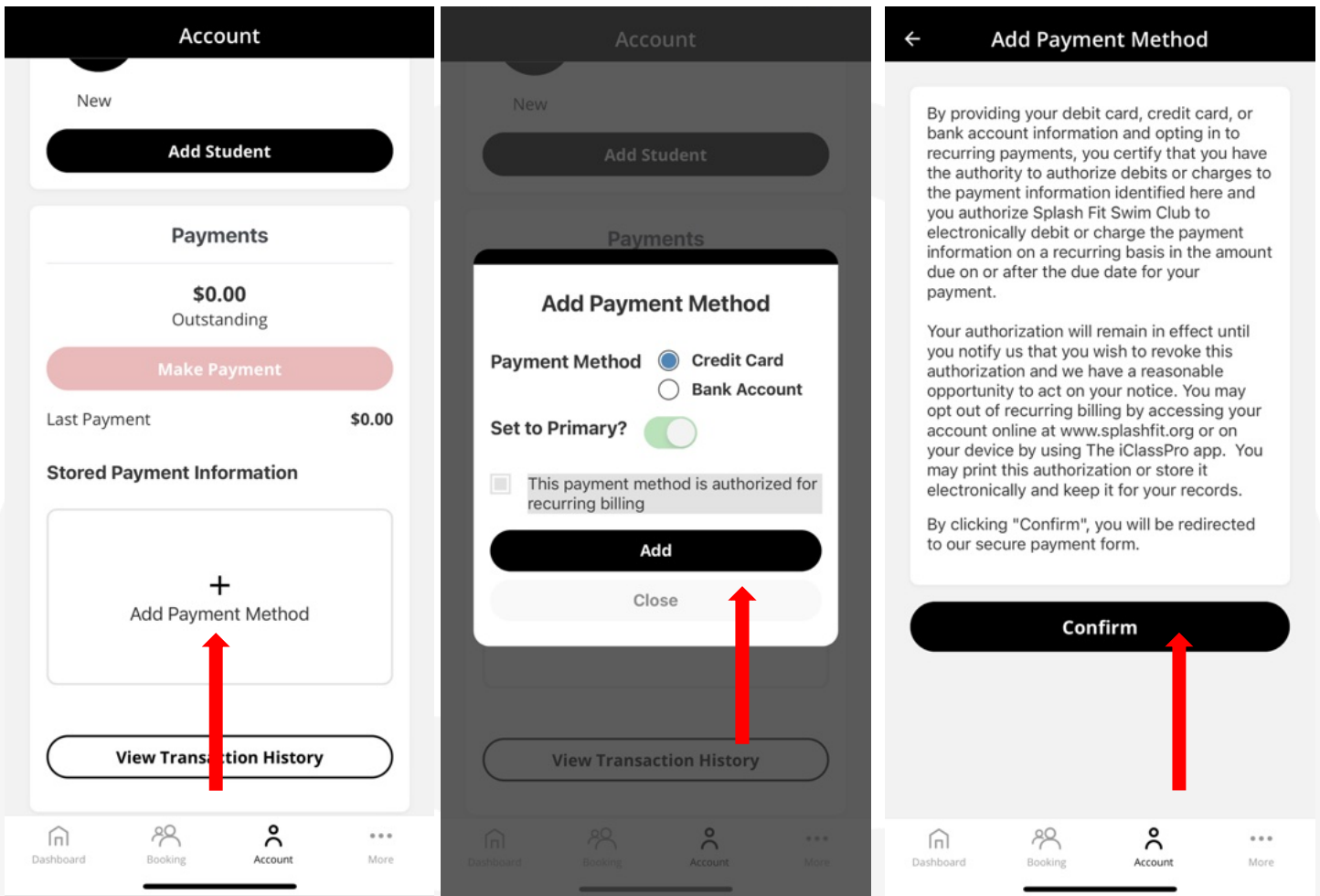
Select location  
Create New Student  
Enter Student information and Save

**NOTE: Multiple students can be added under same account.**

### CLASS SCHEDULE:

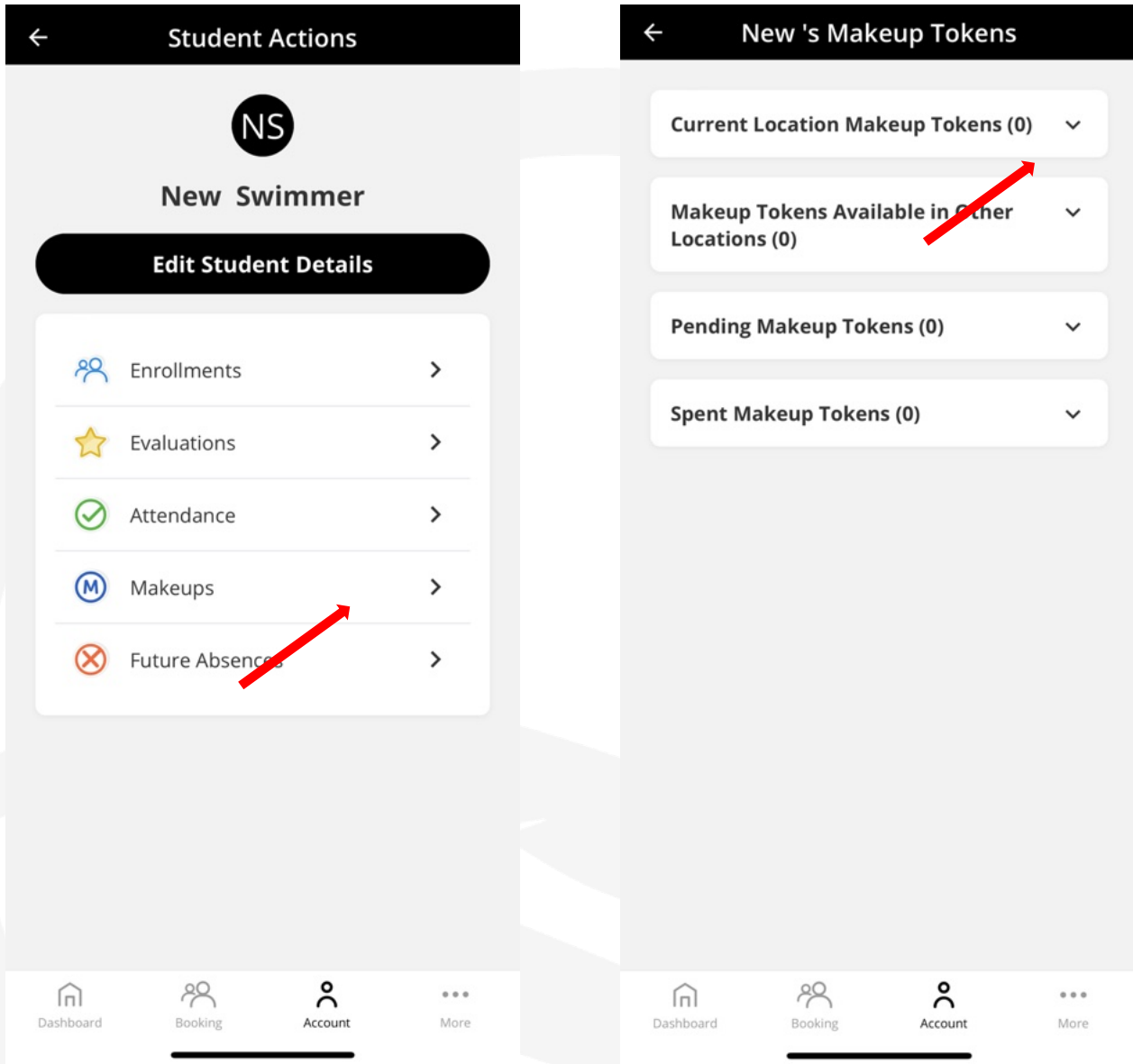


**PAYMENT METHOD:**

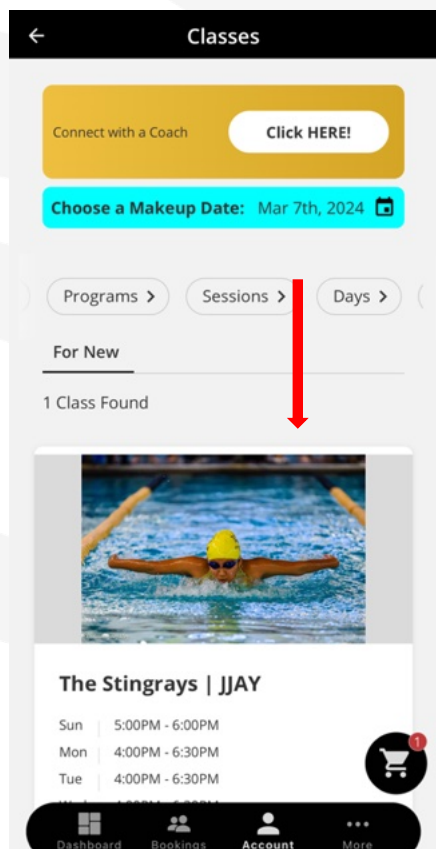
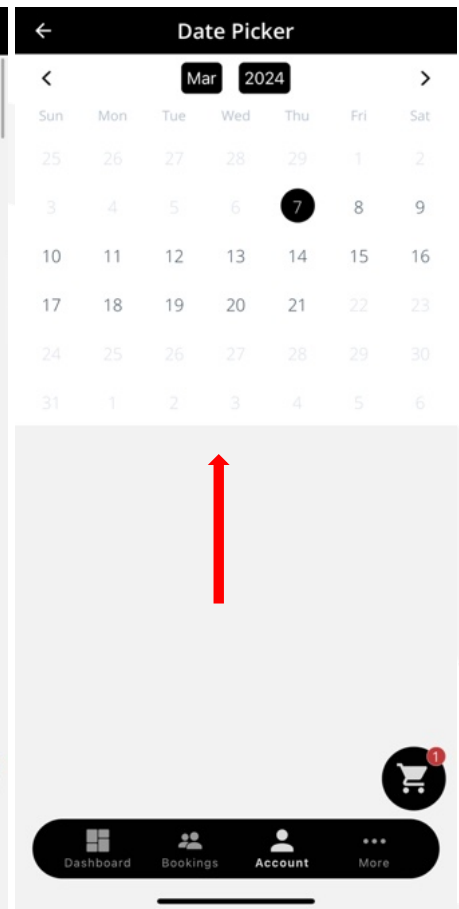
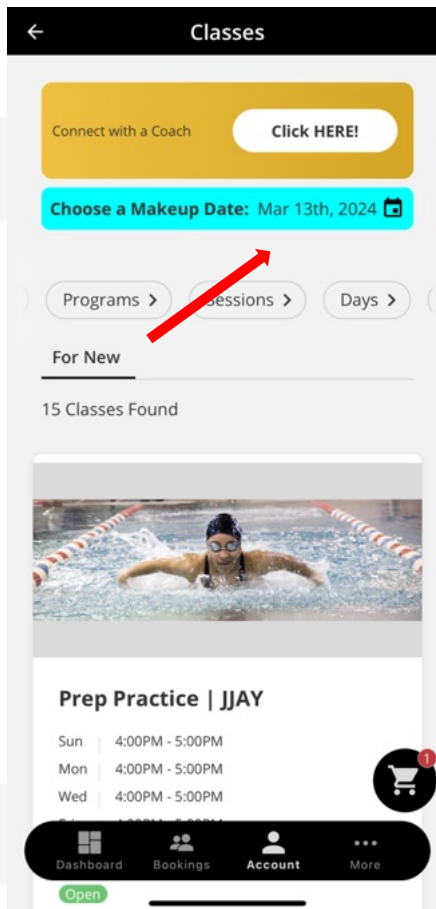
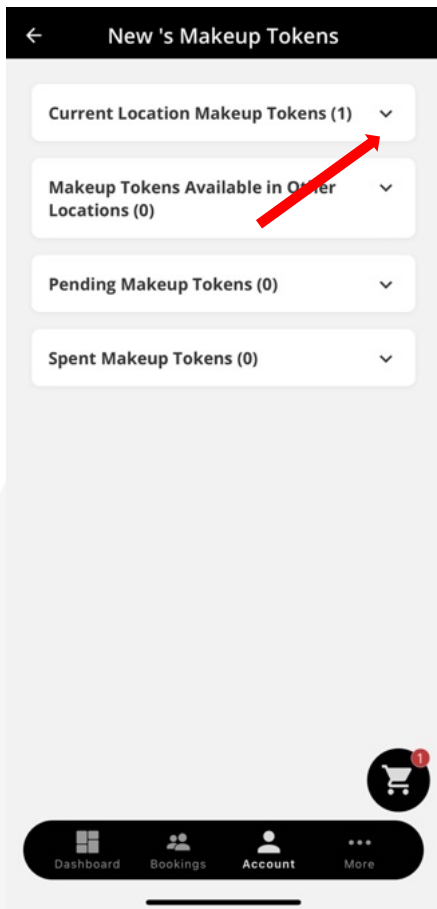


**Press Account symbol  
 Add Payment method  
 Select confirm.**

**VIEWING MAKEUP TOKENS:**

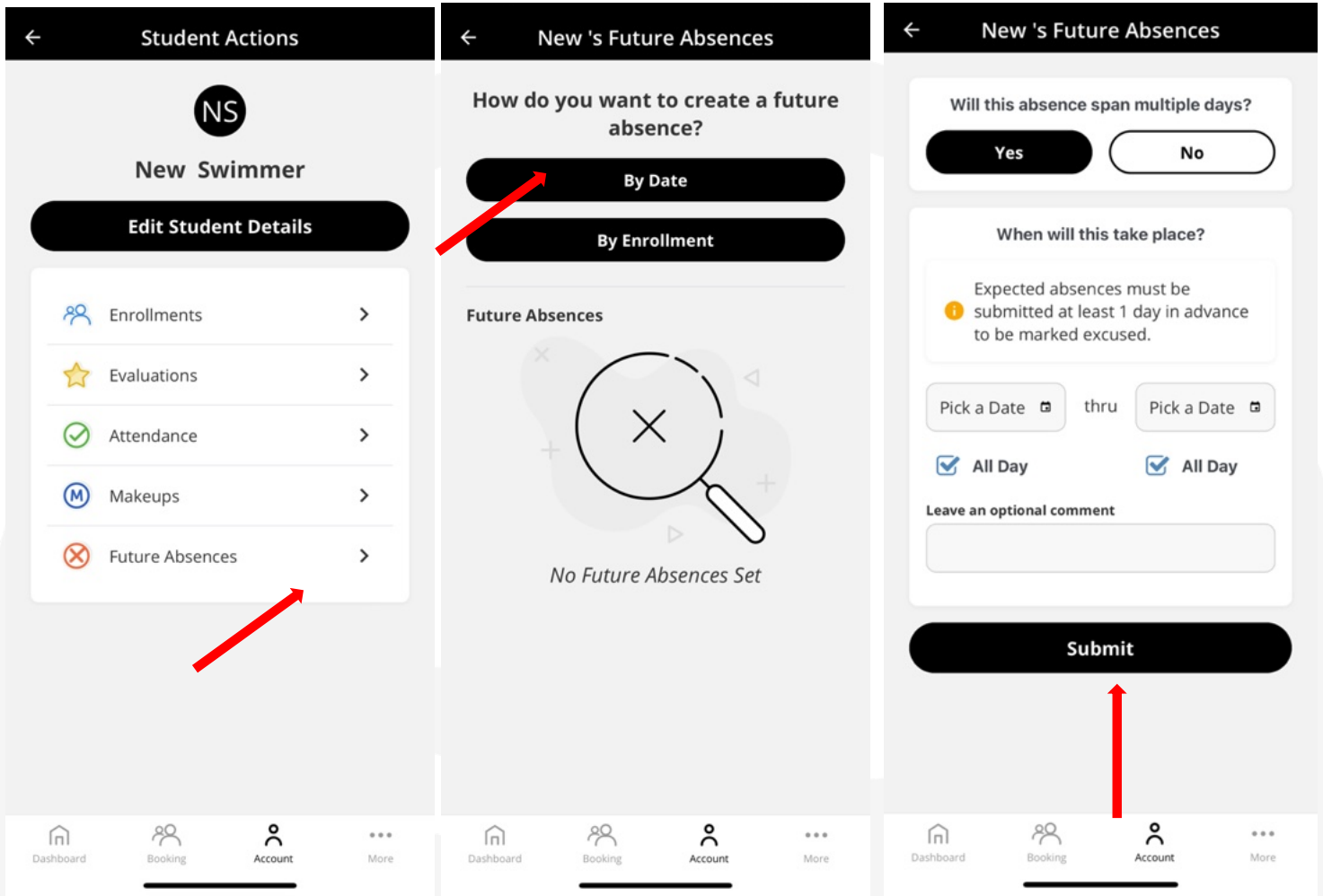


### APPLYING MAKEUP TOKENS:

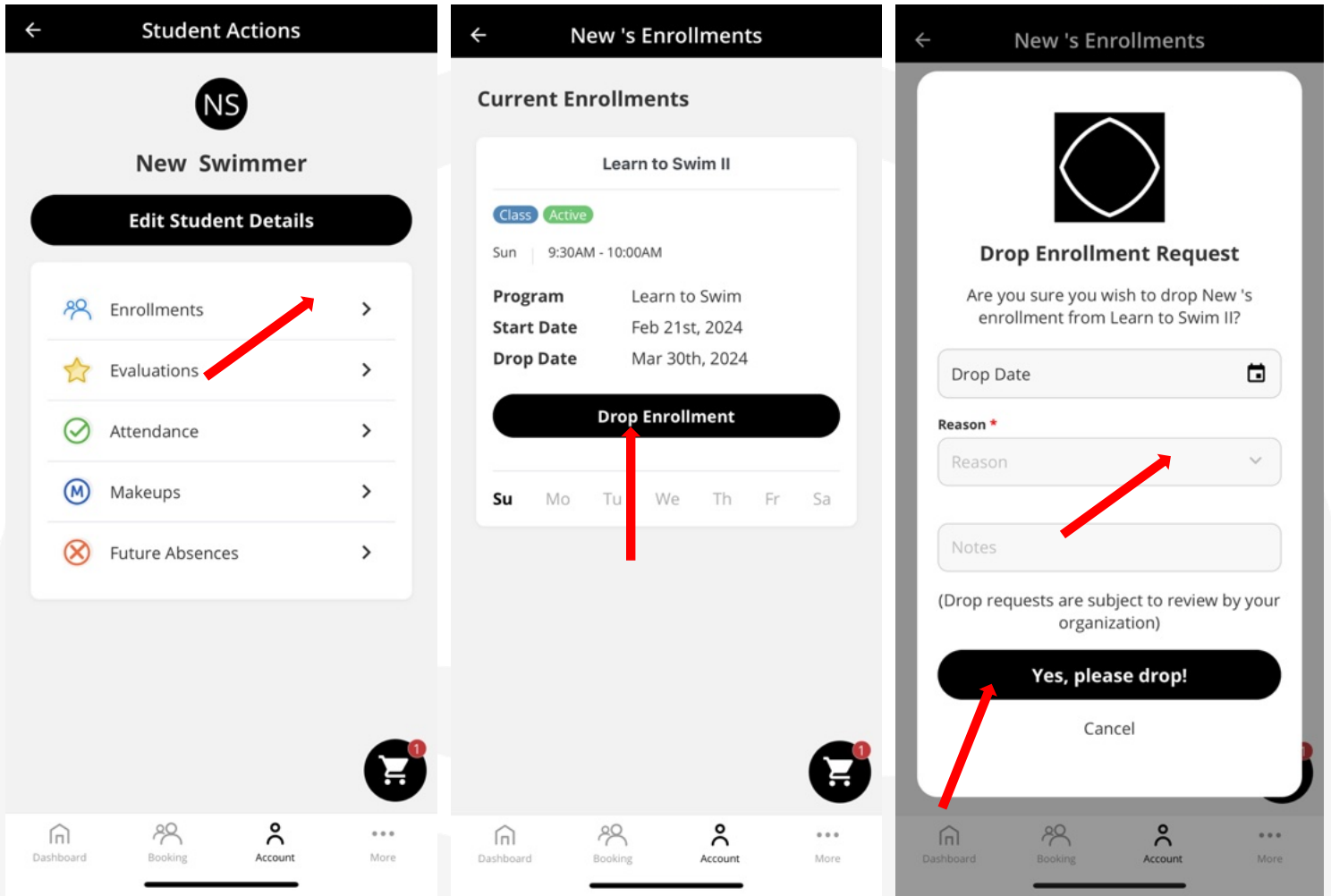




**ABSENCES:**

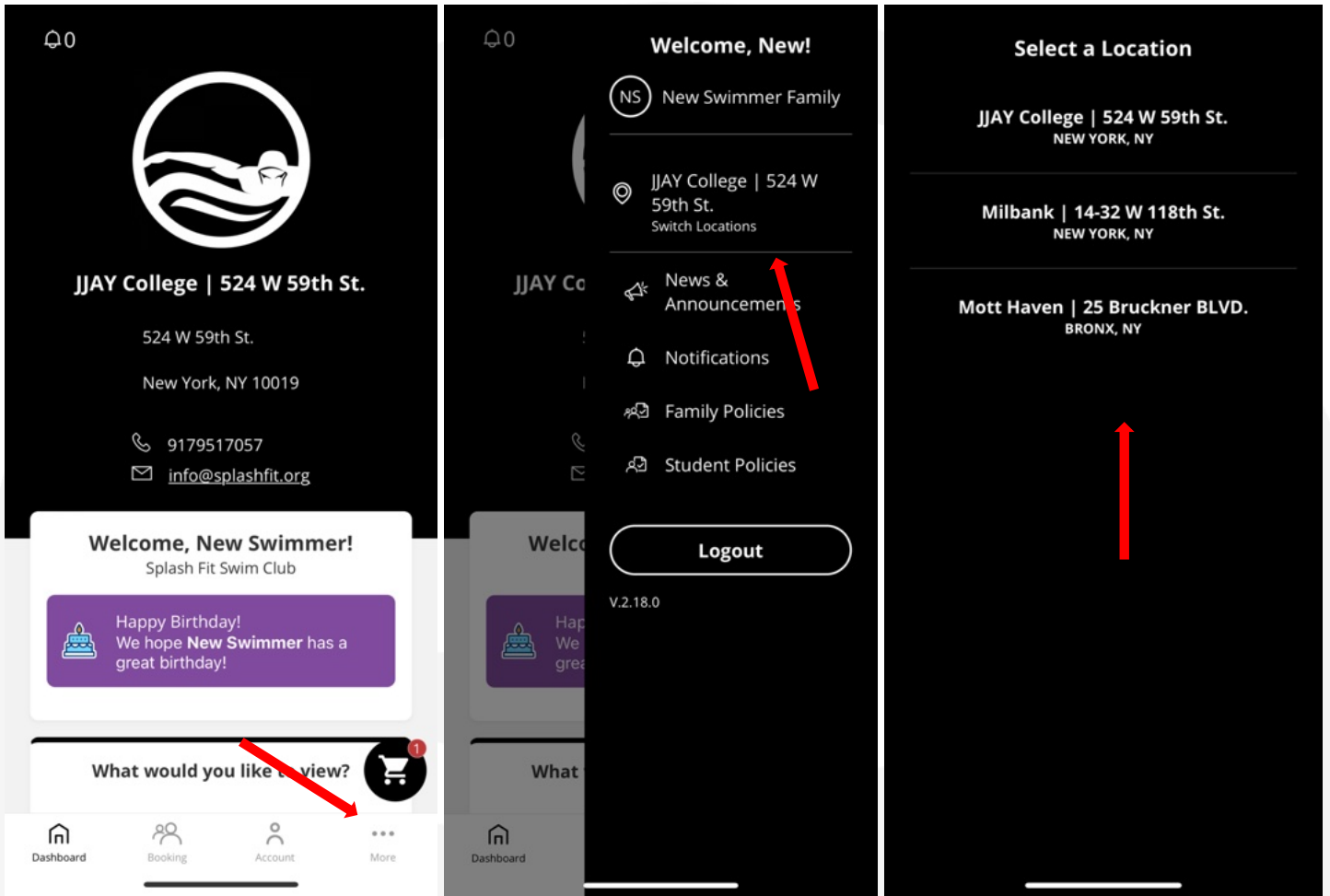


**CLASS DROP:**



Link for submitting Cancellation request form: <https://splashfit.org/cancel/>

**LOCATION SETTINGS:**



**NOTE: CLASSES SHOWN DEPEND ON WHAT YOUR LOCATION IS SET TO**

**VIEWING NOTIFICATIONS:**

